

# Fiberglass Specialties, Inc

500 Austin Ave. Henderson, TX 75653

## Wall Cross Mounting Instructions

1. Unpack cross and all accessories.
2. Determine the best location of mounting brackets for your installation.
3. Install brackets on back of cross using self tapping screws provided. See FIGURE A.
4. Install cross on wall
4. If the cross was ordered with a Filament Cord backlighting kit, the kit has been preinstalled at the factory. If being used outdoors, the receptacle cover should be weather resistant & the receptacle GFIC protected. Plug is standard 15A/120V.

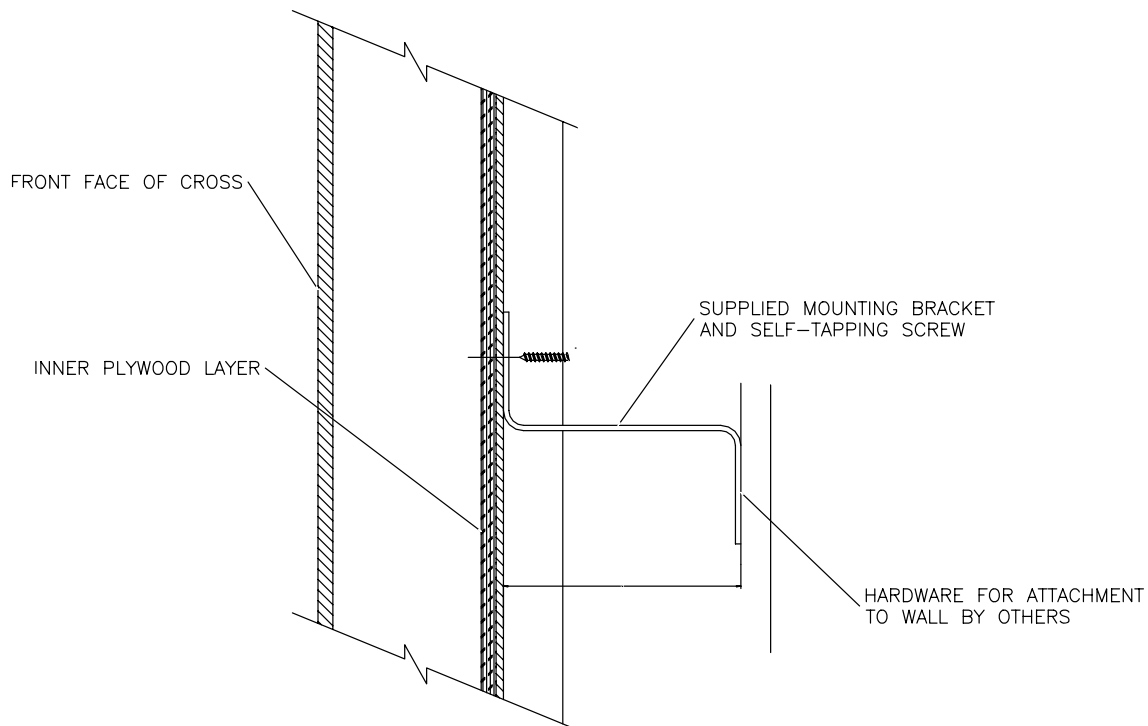


FIGURE A

**Questions? Call 800-527-1459 and ask for Warranty Services**